



## **USER MANUAL - PENTA WAVE - 1 QUICK LOCK DOOR**



# ||||| Content

1. Opening the front of the Penta Wave system p. 1
2. Closing the front of the Penta Wave system p. 3
3. Opening the rear of the Penta Wave system p. 5
4. Closing the rear of the Penta Wave system p. 7





# 1. Opening the front of the Penta Wave system

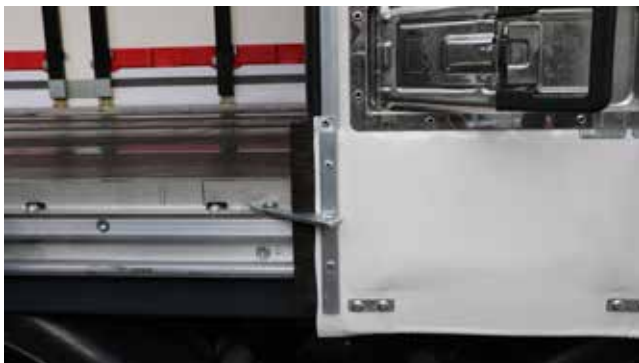
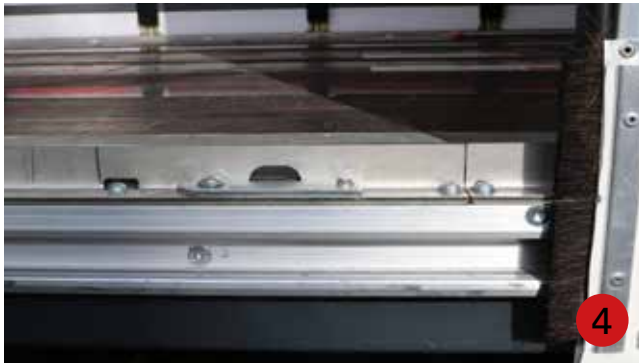
1. Unlock the door lock by pressing the safety cover.
2. Pull the locking handle to the front of the vehicle to open the door. The hook profile can now be unlatched.
3. Pull or push the system open.





## Opening the front of the Penta Wave system

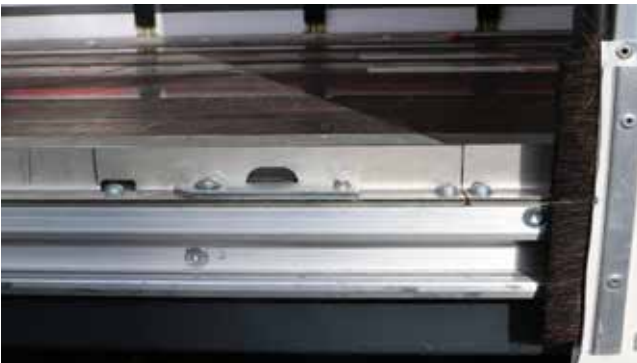
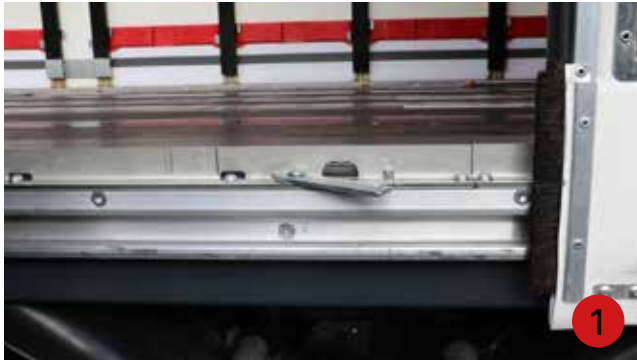
4. Push the system past the door stopper. Pull out the door stopper, as demonstrated, to keep the system open.





## 2. Closing the front of the Penta Wave system

1. Open the system a bit further and push the door stopper inside, as demonstrated.
2. Close up the system by pulling.





## Closing the front of the Penta Wave system

3. Hook up the hook profile of the Quick Lock door behind the front corner pillar. Make sure the hook profile is hooked over the entire length.
4. Close the door lock by pushing the handle.







## 3. Opening the rear of the Penta Wave system

1. Unlock the ratchet.
2. Lift out the tensioning tube.
3. Unlock the end pillar with the red cable.



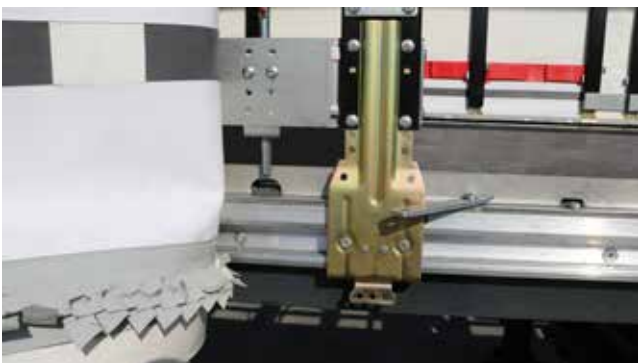
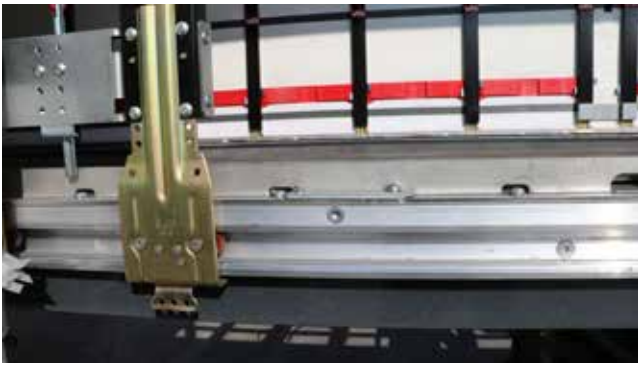


## Opening the rear of the Penta Wave system

4. Open the system by pushing.



5. Pull the door stopper out, as demonstrated, to keep the system open.



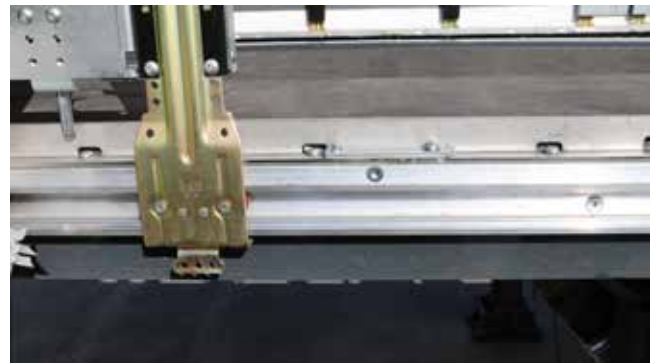
5





## 4. Closing the rear of the Penta Wave system

1. Open the system a bit further and push the door stopper inside, as demonstrated.
2. Close the system by pulling it till the end pillar locks.
3. Place the tension tube in the ratchet and tension the side curtain. Make sure that the top of the curtain is placed behind the rubber seal.





## Closing the rear of the Penta Wave system



Effortless and safe access to heavy cargo

