



Revision date 01-03-2020  
Versus-Omega preserves the right to alter parts, drawings, pictures, and subscriptions at all times.



## USER MANUAL PENTA WAVE AXCES



# ||||| Content

1. Opening the front of the Penta Wave Axces system p. 1
2. Closing the front of the Penta Wave Axces system p. 5
3. Opening the rear of the Penta Wave Axces system p. 8
4. Closing the rear of the Penta Wave Axces system p. 12





# 1. Opening the front of the Penta Wave Axces system

1. Open the buckles and unfasten the hooks from the chassis.





## Opening the front of the Penta Wave Axces system

2. Unlock the door lock by pressing the safety cover.
3. Pull the locking handle to the front of the vehicle to open the door. The hook profile can now be unlatched.
4. Pull or push the system open.

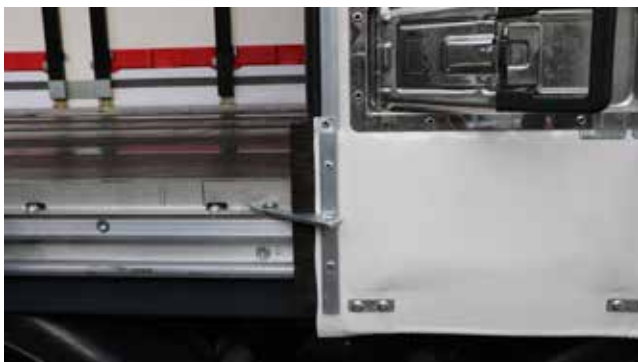
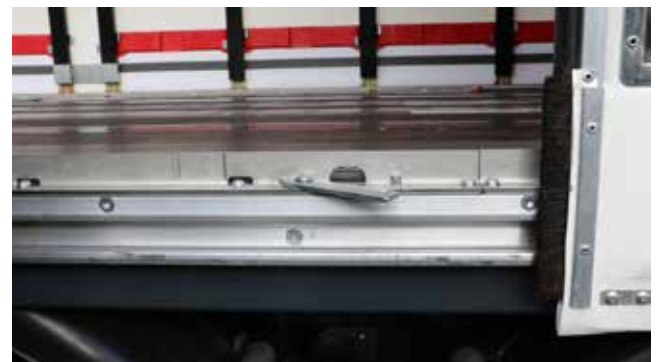
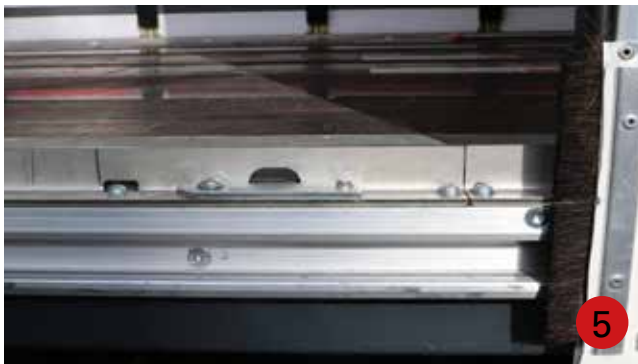






## Opening the front of the Penta Wave Axces system

5. Pull the door stopper out, as demonstrated, to keep the system open.





## Opening the front of the Penta Wave Axces system

6. Open the back doors.



7. Lift the roof.



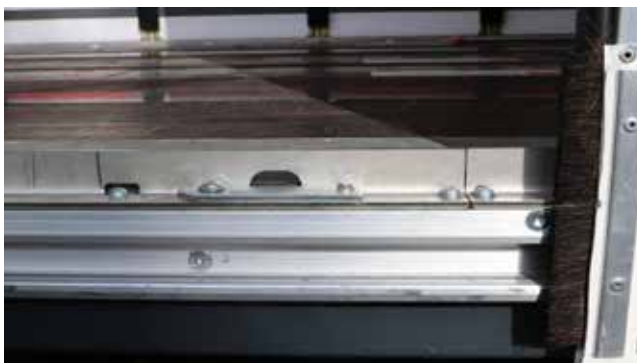
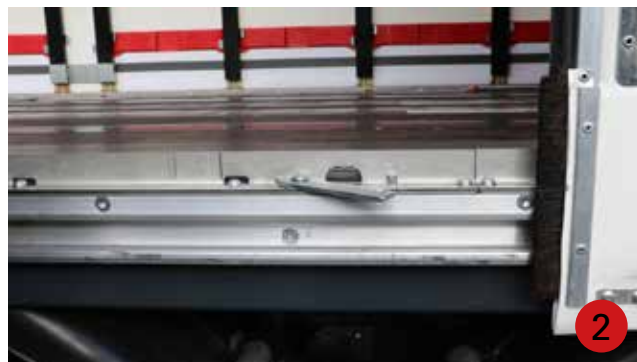


## 2. Closing the front of the Penta Wave Axces system

1. Lower the roof.



2. Open the system a bit further and push the door stopper inside, as demonstrated.
3. Close up the system by pulling.





## Closing the front of the Penta Wave Axces system

4. Hook up the hook profile of the Quick Lock door behind the front corner pillar.
5. Close the door lock by pushing the handle.



6. Hook the straps again behind the chassis, tighten them and close the buckles.







## Closing the front of the Penta Wave Axces system



### 7. Close the back doors.





### 3. Opening the rear of the Penta Wave Axces system

1. Open the buckles and unfasten the hooks from the chassis.







## Opening the rear of the Penta Wave Axces system

2. Unlock the ratchet.
3. Lift out the tensioning tube.
4. Unlock the basic door with the red cable.



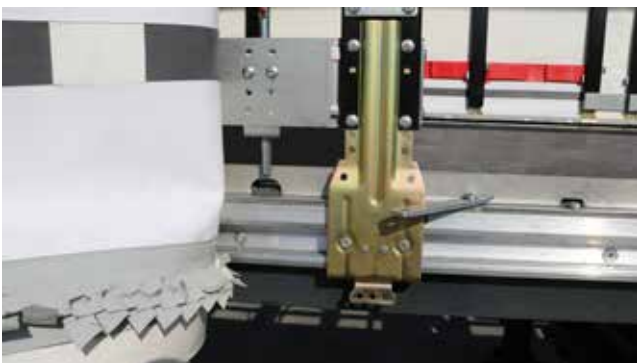
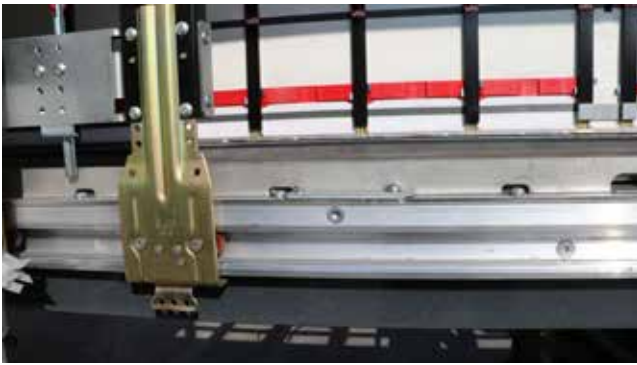


## Opening the rear of the Penta Wave Axces system

5. Open the system by pushing.



6. Pull the door stopper out, as demonstrated, to keep the system open.



6





## Opening the rear of the Penta Wave Axces system

7. Open the back doors.



8. Lift the roof.



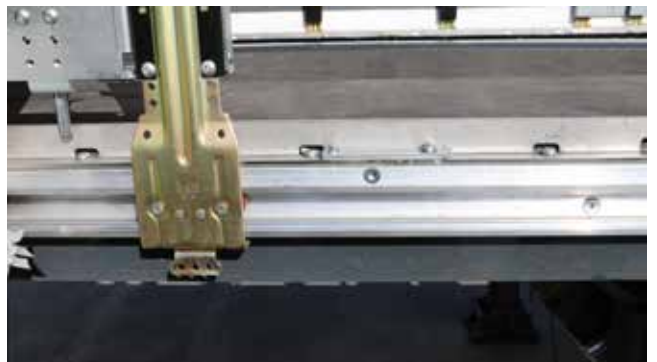


## 4. Closing the rear of the Penta Wave Axces system

1. Lower the roof.



2. Open the system a bit further and push the door stopper inside, as demonstrated.





## Closing the rear of the Penta Wave Axces system

3. Close the system by pulling it till the end pillar locks.
4. Place the tension tube in the ratchet and tension side curtain. Make sure the side curtain fits behind the rubber seal.







## Closing the rear of the Penta Wave Axces system

5. Hook the straps again behind the chassis, tighten them and close the buckles.







## Closing the rear of the Penta Wave Axces system

6. Close the back doors.



When Penta & Axces meet:  
endless product combinations

